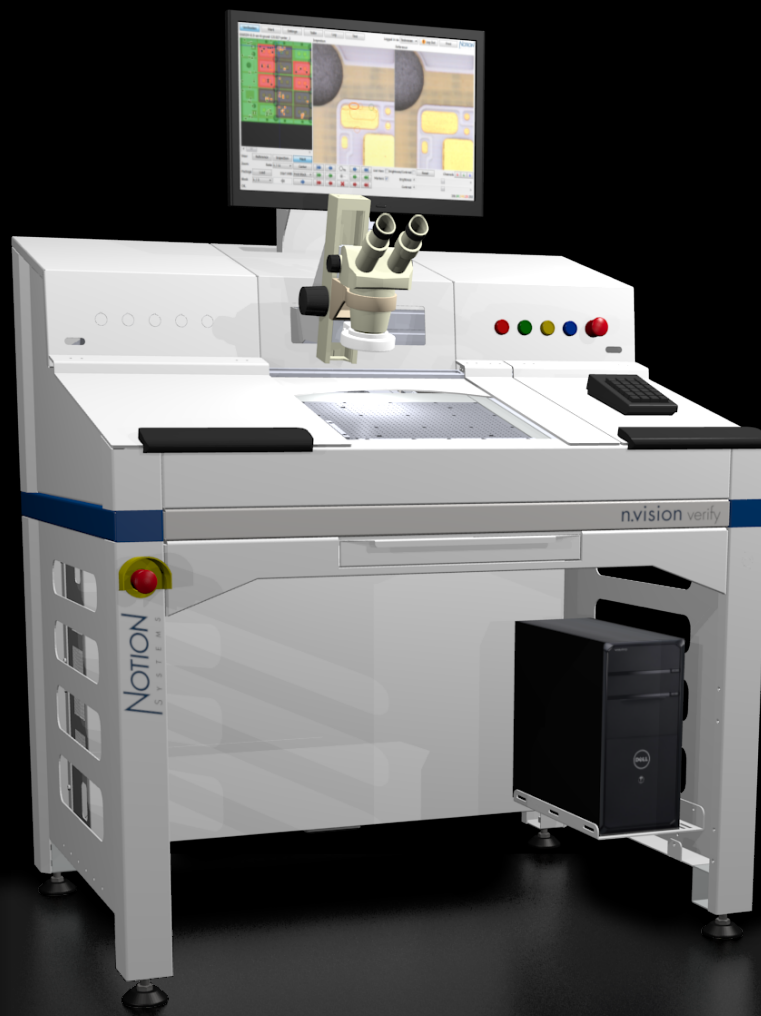


# n.vision verify

## PCB repair and verification station



# PRODUCT SPECIFICATION

## ADVANTAGES

- Compatible with SHIRAI Visper 300 and 700 series
- Up to 330 mm × 250 mm PCB formats
- User interface matches SHIRAI Visper Repair System (VRS) -> Minimal training required
- Accelerated sub panel defect recognition: Skip over positions on already identified defective sub panels
- Support of double sided panel inspection
- Easy and fast setup of inspection recipes
- User level management
- Ergonomically designed
- Customizable stand-alone key pad
- NIKON high resolution precision stereoscopic microscope with zoom body for visual inspection
- Efficient white LED ring light
- Optional CCD camera with real time computer vision
- Laser pointer for easy identification of sub panels identified defective
- Low maintenance due to precision linear motor drive x-y stage

## TECHNICAL DATA

Substrate size	330 x 250 mm (larger on request)
Substrate height	Up to 10 mm
Substrate fixture	Hard stop & optional vacuum hold down
Stage	Repeatability < 10 micron
Dimensions	(w) 1200 x (d) 950 mm x (h) 1700 mm
Electrical interface	230 V / 400VA, transformer included if necessary
User Interface	Intuitive GUI, matches SHIRAI Visper Repair System (VRS)
Display	24" wide screen TFT
Microscope	NIKON high resolution precision stereoscopic microscope
Optional camera	Color CCD, better than 5 micron resolution